



Fluorescence Caries Detection Aid System

Software Installation Notes

The Drivers and Utilities Disk includes the full operator’s manual, the latest USB device drivers, and a demonstration program to help troubleshoot any problems you may encounter.

System Requirements

The Computer System (laptop or computer, monitor, etc.) and any related peripheral or other equipment, supplied by the user, or a third party, must comply with IEC 60601-1 and the resulting system must comply with IEC 60601-1 and/or IEC 60601-1-1 harmonized national standards when set-up within the immediate patient vicinity (ie. within 6 feet). Accessory equipment outside the patient vicinity must comply with IEC 60601-1 or IEC 60950-1 as allowed by IEC 60601-1-1.

The minimum computer system requirements necessary to operate the Spectra Fluorescence Caries Detection Aid System are listed below:

- Operating System: Windows 2000 Professional for an Intel 32-bit processor with Service Pack 4 and the KB 820759 update or later; or
Windows XP Professional for an Intel 32-bit processor with Service Pack 1 and the KB 822603 update or later
- USB Port: USB 2.0 High-Speed, High-Power Port
- CPU: 2GHz Pentium-4
- System RAM: 256MB
- Display: 16MB Video Card supporting 800 x 600 pixels with 32-bit color
- Imaging Software: Authorized DirectX 9 compliant streaming video software application.

Installing the Software

NOTE: You must have Administrative privileges in order to install the device drivers and utilities.

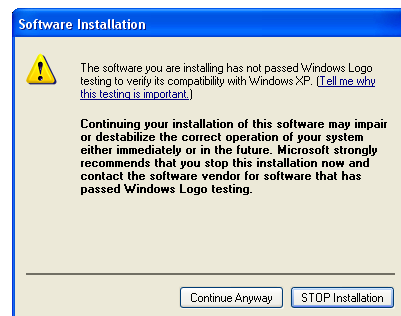
Use the installation program to install the device drivers and, optionally, the utilities.

The installation program can be started from the menu that automatically starts when the Drivers and Utilities disk is inserted into your CD-ROM player. From the menu, click on “Install the Spectra Drivers and Utilities” to start the installation program.

Alternatively, to start the installation program, double-click on the file named “Spectra.exe” located in the root directory of the disk, typically “D:\Spectra.exe”.

The installation program will give you the option to install the device drivers and diagnostic utilities. During a complete installation, all these will be installed.

While installing the device drivers, Windows may report that the software has not passed Windows Logo testing. Press the ‘Continue Anyway’ button to complete the installation.



Loading USB Device Drivers

NOTE: You must have Administrative privileges in order to load the device drivers for the first time.

Please use the installation program to install the device drivers. While the drivers can be loaded from the Device Drivers folder on the Drivers and Utilities Disk, installing them with the software guarantees that they are always available when required.

When you connect your Spectra Fluorescence Caries Detection Aid System to the computer and turn it on for the first time, Windows will load the device drivers. If you installed the device drivers using the installation program, Windows will automatically find and load them. If you did not install the device drivers with the software, insert the Drivers and Utilities Disk and have Windows search the disk for the drivers.

Windows may report that the device drivers have not passed the Windows Logo testing. Press the 'Continue Anyway' button to allow the installation of the drivers to complete.

Depending on the peripherals installed on your computer, Windows may need to reboot after loading the drivers. After rebooting your computer, the Spectra Fluorescence Caries Detection Aid System should operate correctly.



Uninstalling the Software

NOTE: You must have Administrative privileges in order to uninstall the device drivers and utilities.

To uninstall the software, run the installation program from the disk and select 'Remove'.

Alternatively, from the 'Start' button, select 'Settings' and then 'Control Panel'. In the 'Control Panel' window, double-click the 'Add or Remove Programs' icon. In the list of currently installed programs, locate the 'Spectra' and press the 'Remove' button.