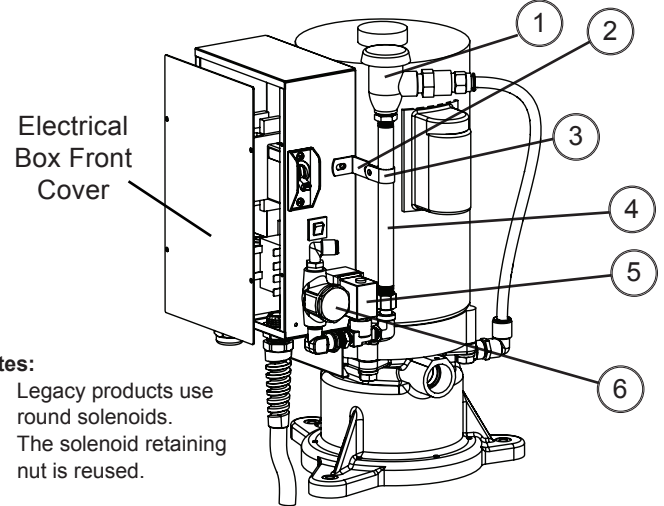


Replacement Instructions

Replace the solenoid used on the VacStar dental vacuum models VS20 and VS40 by performing the following steps.

1. Disconnect and turn off power. Turn off facility water supply.
2. Disconnect all pneumatic and water connections.
3. Remove Phillips head screw and clamp (3) securing part of the water system to electrical box.
4. Remove the electrical box front cover by removing the four Phillips head securing screws.
5. Tag and remove the solenoid wires connected to the terminal blocks inside the electrical box.
6. Remove retaining nut (7) securing the solenoid to electrical box sidewall. The water system should now be completely detached from electrical box.
7. Disassemble the water system as follows making sure to note all orientations for reassembly purposes.
 - a. Remove inlet strainer assembly (6).
 - b. Remove the nipple (4) with connected vacuum breaker (1).
8. Check the inlet strainer for dirt and debris. Clean as needed. Make sure to properly seat the mesh strainer in the cover nut.
9. Reassembly the water system by attaching parts to new solenoid (5) assembly.
 - a. Install the nipple (4) with vacuum breaker (1) to the outlet side of the new solenoid.
 - b. Install strainer assembly (6) to the inlet side of the new solenoid.
10. Replace bracket (2) that secures water system with new one provided. Secure solenoid to side of electrical box with retaining nut (7).
11. Reattach wire connections from solenoid. Attach clamp (3) to nipple (4) and secure to bracket (2) on side of electrical box.
12. Install the front cover to the electrical box and secure with four Phillips head screws.
13. Reconnect all pneumatic and water connections.
14. Turn on facility water supply.
15. Reconnect and turn on power.

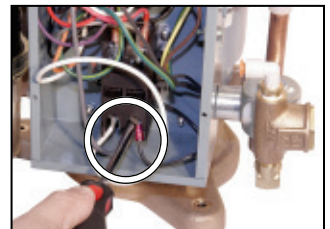
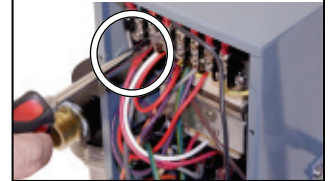


Notes:

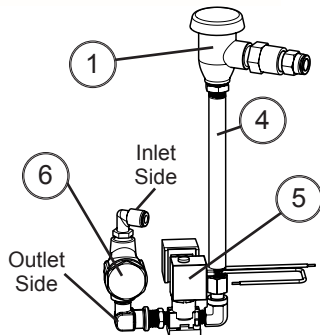
1. Legacy products use round solenoids.
2. The solenoid retaining nut is reused.

Item	Description	Item	Description
1	Vacuum Breaker	5	Solenoid Assembly
2	Water System Bracket	6	Inlet Strainer assembly
3	Water System Clamp	7	Retaining Nut
4	Nipple		

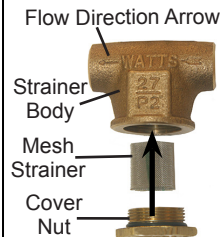
Disconnect Solenoid Wires



Water System Disassemble / Assemble



Assembling the Inlet Strainer



1. Orienting the assembly as shown, seat strainer into the cover nut.
2. Insert the strainer into the strainer body and tighten the cover nut.
3. Make sure the strainer stays perpendicular
4. Do not over tighten the cover nut.

Important: Install strainer (4) with flow arrow facing into the solenoid inlet.

Water System Removal & Installation

