

VistaEasy 5.17



US

Installation and Operating Instructions

RxOnly

CE 0297

AIR
TECHNIQUES equipped for life®

210010009L29



© Air Techniques | P/N E7209 | 07/2020

Contents

1 General	4
1.1 Symbols used	4
1.2 Classification	4
1.3 Indications for use	4
1.4 Intended use	5
1.5 Improper use	5
1.6 Side effects	5
1.7 Specialist personnel	5
1.8 Storage of the data storage media	5
1.9 Data backup before installation	5
1.10 Effect on the computer	5
1.11 Safety	5
1.12 Notification requirement of serious incidents	6
1.13 Protection from threats from the Internet	6
1.14 Copyright and property rights information	6
1.15 End User Licensing Agreement (EULA)	6
1.16 System requirements	6
2 Installation	7
2.1 Data backup before updating	7
2.2 Performing the Installation	8
3 Configuration	9
3.1 Starting VistaConfig	9
3.2 Activating VistaEasyView	9
3.3 Configuring corner masking	9
3.4 Job settings	10
3.5 Closing VistaConfig	10
3.6 Using the TWAIN interface (source) in the third-party application	11
3.7 Using the VistaEasy interface in the third-party application	12
4 Application	13
4.1 Starting recording via third-party application	13
4.2 Importing an exposure (X-ray image)	15
4.3 Import recording (video image) with CamX / CamX Spectra	17
4.4 Viewing recordings in VistaEasyView	19
4.5 Editing recordings in VistaEasyView	21
4.6 Sending recordings from VistaEasyView to third-party applications	26
4.7 Closing VistaEasy	26
5 VistaEasy Job Management	27
5.1 Configuring job management	28
6 Log management	30
6.1 Viewing the log file	30
7 Troubleshooting	31
7.1 Transport	31
7.2 Troubleshooting	31

1 General

1.1 Symbols used



Warnings

The signal word differentiates between four levels of danger:

DANGER

Immediate danger of severe injury or death

WARNING

Possible danger of severe injury or death

CAUTION

Risk of minor injuries

NOTICE

Risk of extensive material/property damage



Note, e.g. specific instructions regarding the efficient use of the device/software.



Comply with the Operating Instructions.



CE mark with notified body number



Manufacturer



Medical device



Caution: Federal law restricts this device to sale by or on the order of a Doctor.



Take note of the accompanying electronic documents

1.2 Classification

Medical device of class IIb

FDA Classification (CFR Title 21) II

1.3 Indications for use

DBSWIN and VistaEasy imaging software are intended for use by qualified dental professionals for windows based diagnostics. The software is a diagnostic aide for licensed radiologists, dentists and clinicians, who perform the actual diagnosis based on their training, qualification, and clinical experience. DBSWIN and VistaEasy are clinical software applications that receive images and data from various imaging sources (i.e., radiography devices and digital video capture devices) that are manufactured and distributed by Duerr Dental and Air Techniques. It is intended to acquire, display, edit (i.e., resize, adjust contrast, etc.) and distribute images using standard PC hardware. In addition, DBSWIN enables the acquisition of still images from 3rd party TWAIN compliant imaging devices (e.g., generic image devices such as scanners) and the storage and printing of clinical exam data, while VistaEasy distributes the acquired images to 3rd party TWAIN compliant PACS systems for storage and printing.

DBSWIN and VistaEasy software are not intended for mammography use.

1.4 Intended use

DBSWIN and VistaEasy imaging software is an image management system that allows dentists to acquire, display, edit, view, store, print, and distribute medical images. DBSWIN and VistaEasy software runs on user provided PC-compatible computers and utilize previously cleared digital image capture devices for image acquisition. VistaEasy is included as part of DBSWIN. It provides additional interfaces for Third Party Software. VistaEasy can also be used by itself, as a defeatured version of DBSWIN.

1.5 Improper use

This software must not be used for the following:

- Performance of measurements on images that are not suitable for this purpose due to the way in which the images were created. The software does not provide a measuring function due to the unavoidable geometric image properties of X-ray images. Here displayed values are only intended to serve as guide values. This also applies after use of the calibration function.
- Use for contraindicated purposes for the image-generating system. The operating instructions of the image-generating system must be followed here.
- Not intended for mammography use

Any other usage or usage beyond this scope is deemed to be improper. The manufacturer accepts no liability for damages resulting from this. In these cases the user/operator will bear the sole risk.

1.6 Side effects

At present, no side effects that might permanently impede the function of other programs are known.

1.7 Specialist personnel

Persons using the software must be able to guarantee safe and correct operation based on their training and experience.

- › Make sure every operator is trained in the use of the software.
- › All installation, resetting, alteration, extension and repair work must be carried out either by Air Techniques personnel or by a suitably qualified person approved by Air Techniques.

1.8 Storage of the data storage media

According to the manufacturer's instructions, protect from

- › Direct exposure to magnetic radiation (permanent magnet or electromagnet)
- › Temperature outside permitted range
- › Humidity outside permitted range
- › Damage (scratches, breakage, deformation, etc.)

1.9 Data backup before installation

Before installing the software, we recommend you perform a complete data backup for the software already installed on the computer. A regular system backup is vital! For instructions on how to proceed, contact your system administrator.

1.10 Effect on the computer

We do not assume liability for any effect on any software already installed on the computer.

1.11 Safety

Dürr Dental has developed the software in such a way that dangers are effectively ruled out if the software is used in accordance with its intended use.

Despite this, the following residual risks can remain:

- › Personal injury due to incorrect use/misuse
- › Personal injury due to malfunction

1.12 Notification requirement of serious incidents

The operator/patient is required to report any serious incident that occurs in connection with the device to the manufacturer and to the competent authority of the Member State in which the operator and/or patient is established/resident.

1.13 Protection from threats from the Internet

The software runs on a computer that can be connected to the Internet. Therefore, the system needs to be protected from threats from the Internet.

- › Use antivirus software and update it regularly.
- › Look for evidence of possible virus infection and, if applicable, check with the antivirus software and remove the virus.
- › Update the computers operating system regularly.
- › Perform regular data backups.
- › Provide access to computers to authorised operators only, e.g. by means of user name and password.
- › Make sure that only trustworthy content is downloaded. Only install software and firmware updates that have been authenticated by the manufacturer.

1.14 Copyright and property rights information

All circuits, processes, names, software programs and units quoted are protected under industrial property rights of Dürr Dental. The reprinting of these installation and operating instructions or parts thereof is prohibited without the express written permission of Air Techniques.

1.15 End User Licensing Agreement (EULA)

For the current End User Licensing Agreement (EULA), please refer to DBSWIN Installation Process.

1.16 System requirements

Hardware and software

The PC and its components (monitor, printer, etc.) must be constructed according to IEC 60601-1(EN60601-1) if they are operated within the patient environment (up to 1.5 m away from the patient examination area).

- Depending on the combination with other peripheral equipment (video camera, scanner, intraoral X-ray imaging system) the safety requirements of the PC system may differ. Further information can be found in the user manuals or may be derived from the regulations valid for the country where the system is installed (e.g. MPG for Europe).

PC

For current minimum system requirements, see "System requirements for imaging computer systems", order no.: E7201.

2 Installation

2.1 Data backup before updating



CAUTION

Data backup is indispensable since any failure of the system can lead to a loss of data. It also protects you against loss of data due to incorrect operation or destruction (fire, water, ...) of the system.



CAUTION

All the data generated after the backup is no longer available after the backup has been restored.

- › Before restoring the backup, ensure that the new data has been backed up separately.
- › Import the new data of the backup restoration separately.

Directories to be included in the backup

The following directories need to be backed up:



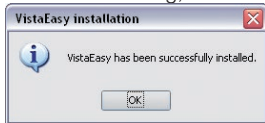
The paths specified here refer to the standard installation of VistaEasy.

%ProgramFiles%\Air Techniques	Installation path
%COMMON_APPDATA%\Air Techniques	Shared data
%APPDATA%\Air Techniques	User data

We also recommend defining a system recovery point in the operating system.

2.2 Performing the Installation

- > Close all running programs.
- > Connect the DBSWIN installation medium to the computer.
If the installation menu does not start automatically, start the file "CD_Start.exe" on the installation medium.
- > Select the required installation language.
- > Click on the "Driver" tab.
- > Click on "VistaEasy Installation".
- > Click on "OK" in the following message.
The installation can be discontinued by clicking on "Cancel".
- > Read the greetings text and confirm by clicking on "Next".
- > Read the End User Licensing Agreement (EULA) and place a checkmark in the "Accept" box if you agree with the contract conditions.
- > Confirm by clicking on "Next".
- > Check the path information, adjust if necessary.
- > Check the station name, adjust if necessary.
- > Start the installation by clicking on "Install".
VistaEasy is being installed.
- > Confirm the dialog, "VistaEasy was installed successfully!", by clicking on "OK".



- > If a dialog is shown inquiring whether or not the computer should be restarted: Confirm the dialog by clicking on "Yes".



After installation, the service technician and the user must assess the image impressions. The filters may need to be adapted to further improve the image quality.

3 Configuration



CAUTION

Risk of data loss due to incorrect configuration
Configuration must only be carried out either by Air Techniques personnel or by a suitably qualified person approved by Air Techniques.

3.1 Starting VistaConfig

➤ Depending on the installed appliance and associated driver, start "VistaConfig" via "Start/All programs/Air Techniques/VistaEasy".

The "VistaConfig" program window opens.

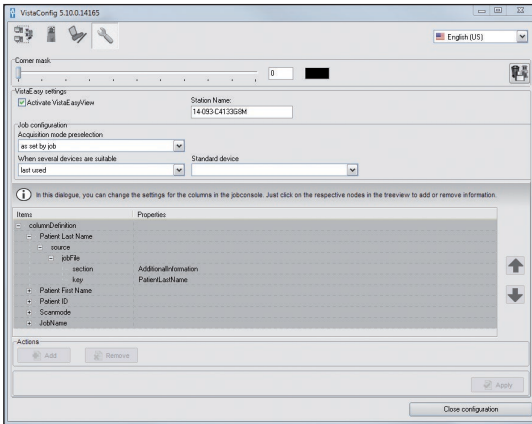


For information concerning the configuration of the individual devices, please refer to the respective installation and operating instructions of the devices.

3.2 Activating VistaEasyView

Before you can use the VistaEasyView image of you interface, the interface needs to be activated. If you do not activate VistaEasyView, the imported images are sent directly to the third-party application and you cannot view or edit the images in VistaEasyView.

➤ Click on the "VistaEasy configuration" button.



➤ Place a checkmark in the "VistaEasyView Settings" area in the "Activate VistaEasyView" checkbox.

3.3 Configuring corner masking

➤ Select a gray value (value range: 0 to 65535) under "Corner mask" (must be enabled in scanning mode).

Corner masking adapts the white edge of an X-ray image - which is created during the import process - to the color of the light table. This aims to prevent dazzle in darkened rooms, thus making diagnostics of the X-ray image easier. Corner masking can be applied to all intra formats of ScanX appliances.



➤ Save the corner masking settings with .

The settings must be saved with this button since they are not accepted otherwise.

3.4 Job settings

- › Select the following under "Job settings":

Acquisition mode preselection	as set by job	When the third party software sends a scanning mode, the transferred scanning mode is used.
	Always manually	The scanning mode must always be selected manually.
	Last used	The scanning mode last used is selected automatically.
For jobs with no definition of appliance type	Last used	The device last used is selected automatically.
	Always standard device	The device selected under "Standard device" is selected.
	Show device list	A list of available devices is shown always.
Standard device	e.g. ScanX, ...	A default device can be selected which will then be used.

3.5 Closing VistaConfig

- › Click on the "Close configuration" button.
- › Confirm the "Save changes" message by clicking on "Yes", if applicable. This saves the configuration and closes the "VistaConfig" program.

3.6 Using the TWAIN interface (source) in the third-party application

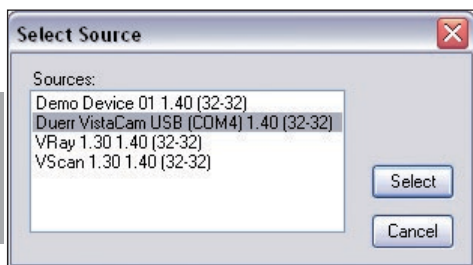
Depending on the third-party application used, a TWAIN source is predefined for the device used or is selected directly when importing.

Predefining the TWAIN source

› Open the menu for the TWAIN source selection in the third-party application. Example:

File	Edit	Image	Options	View	Help
Open...				O	
Reopen				Shift+R	
Open with external editor					▶
Open as					▶
Thumbnails					T
Slideshow...					W
Batch Conversion/Rename...					B
Search files...					Ctrl+F
Rename File...				F2	
Move File...				F7	
Copy File...				F8	
Delete File...				Del	
Save (original folder)					Ctrl+S
Save as...					S
Save for Web... (PlugIn)					
Print...					Ctrl+P
Select TWAIN Source...					
Acquire/Batch scanning...					Ctrl+Shift+A
Copy Shop...					
Recent directories					▶
Exit					Esc

› Select and confirm a TWAIN source in the dialog. Example:

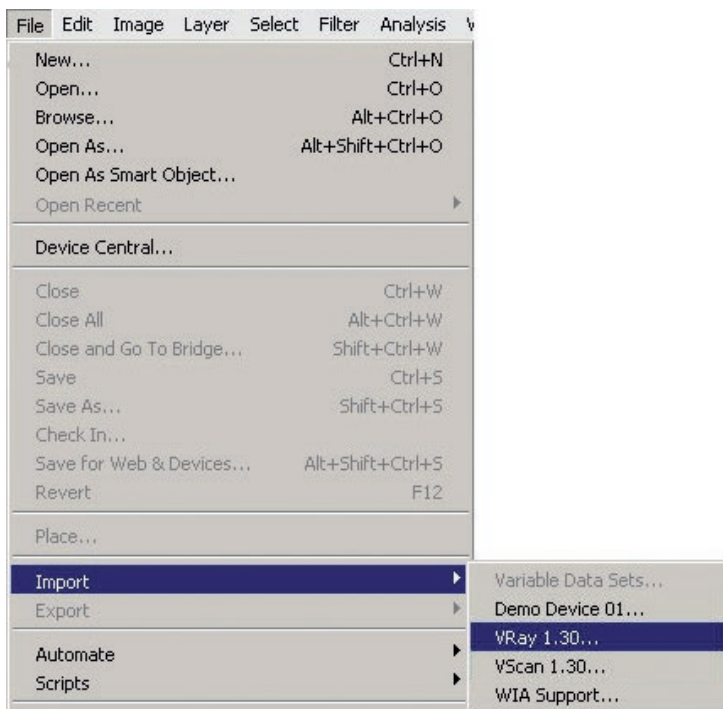


Now, you can start importing in the third-party application via the respective menu.

Select the TWAIN source directly (when importing)

In this case, the selection of the TWAIN source starts the image data import process immediately.

› Open the menu for the TWAIN source selection in the third-party application. Example:



3.7 Using the VistaEasy interface in the third-party application

The VistaEasy interface may be supported depending on the third-party application being used.

Inquire with the manufacturer of the third-party application or Air Techniques to find out whether or not the third-party application supports the VistaEasy interface. If this is the case, the interface must be enabled via a defined button. This is detailed in the third-party application manual.

4 Application

4.1 Starting recording via third-party application



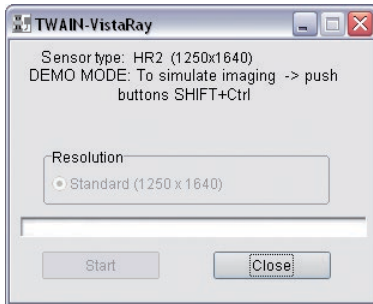
The application listed below is an example!

Please consult the third-party application manual for information as to whether or not and how the TWAIN or VistaEasy interface is used in the third-party application.

If no TWAIN source can be predefined in the third-party application, the TWAIN source is selected again with each import process (refer to chapter, "Configuration").

- > Start the third-party application.
- > Select the TWAIN source and start the TWAIN import.
The device-specific preview window opens.

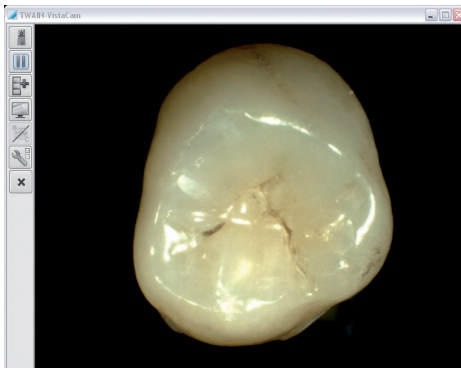
Preview window – Examples:



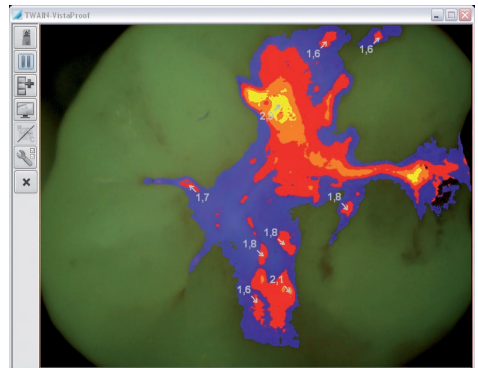
for SensorX



for ScanX



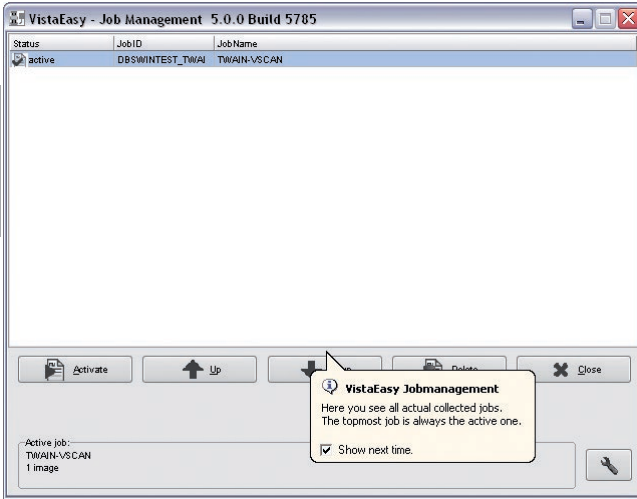
for CamX



for CamX Spectra

The started recording appears as a job in the VistaEasy job management.

VistaEasy-Job Management – Example (ScanX)



VistaEasy also creates an icon  in the task bar  next to the Windows clock. Double-clicking on this icon opens up the VistaEasy Job Management, which displays information on the current job.

For explanations on the VistaEasy job management: refer to chapter, "VistaEasy Job Management"

4.2 Importing an exposure (X-ray image)

SensorX

- › SensorX: Click on "Start".


The image is imported. The progress bar in the preview window gradually fills up.

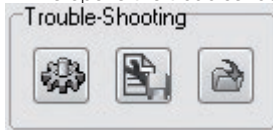
ScanX connected to a computer

- › ScanX: Select the scan mode in the "Scan mode selection" list in the preview window.
The scanner is being initialized.
- › Insert the image plate or cassette into the scanner.
The image plate or cassette is being drawn in. The progress of the import process is shown in the preview window. After the import is completed, the device is ready for use again. The message "Scanner ready" is shown in the preview window.

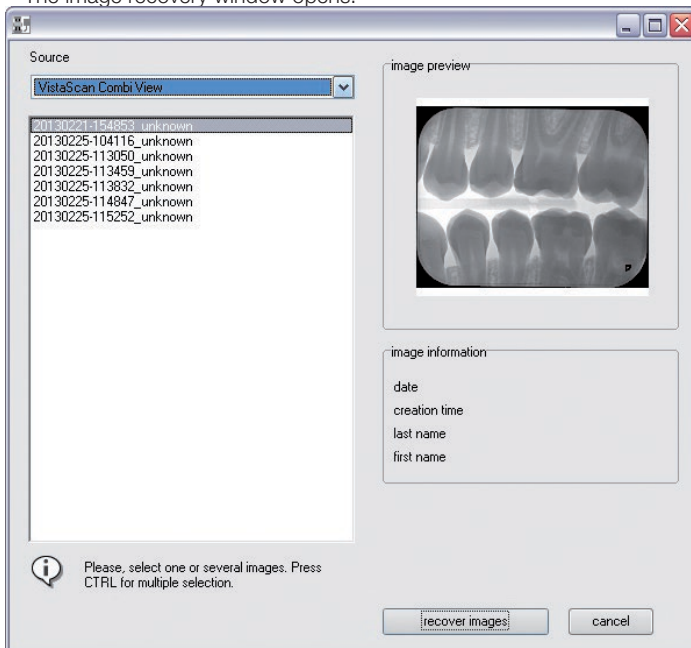
Depending on the configuration, the imported recording is loaded into the third-party application or in VistaEasyView and the preview window is closed. The VistaEasyView window is shown only if VistaEasyView is enabled in the configuration (refer to chapter, "Configuration").

ScanX in Stand-Alone operation

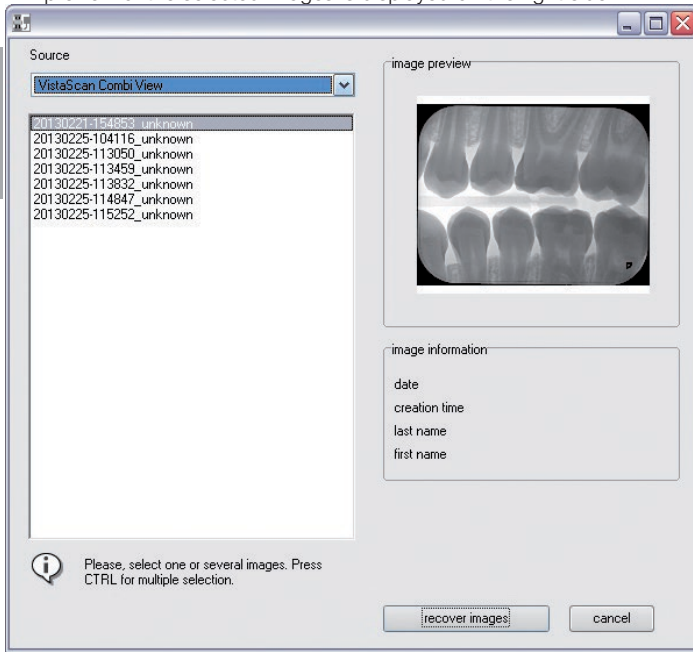
- › Click on the  button in the preview window.
This opens the troubleshooting.



- › Click on the  button.
The image recovery window opens.



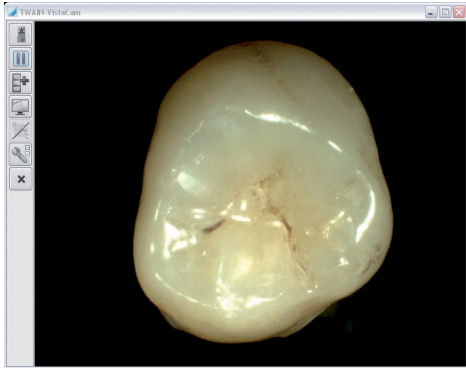
- › Under "Source", choose the entry of the desired scanner.
All images on the device are displayed in a list on the left side.
A preview of the selected images is displayed on the right side.



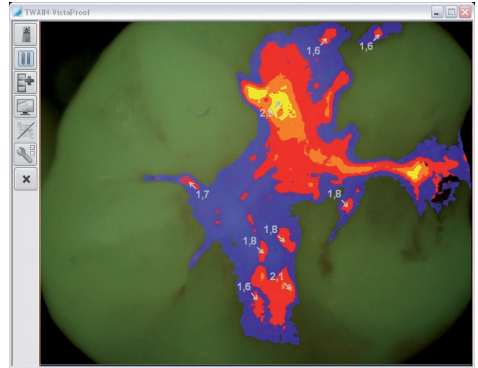
- › Mark those images in the list which should be transferred again.
- › Click on the "Transfer image(s)" button.
The images look like a normal scan job again.

4.3 Import recording (video image) with CamX / CamX Spectra

The current video recording is shown in the preview window.



Preview window for CamX



Preview window for CamX Spectra

The following actions can be performed with the buttons:



Select video source. The video source used most recently is selected by default.



Camera is in Pause mode (still image).



Camera is in Live mode



Record single image. The transmission depends on the operating mode:

- in VistaConfig mode: The recording is shown in the image preview bar of VistaEasyView
- In VistaEasy mode: The recording is transferred directly to the third-party application. (with VistaEasyView enabled; refer to chapter, "Configuration")



Open full-screen mode



Select and apply prophylaxis/caries filter (only available with CamX Spectra)

The button is only active if a video image is displayed in pause mode (still image). The caries view is enabled by default.




Open camera configuration: "Video settings" and "Enable profile" (only possible with cameras having a capture ring)



Abort the recording and close the preview window

Configure the camera

- > Click on the  button.
- > Select "Video settings" in the context menu or activate the desired profile.

Select video source

- > Click on the  button.

- › Select the desired video source from the list of registered devices in the context menu.
The current image of the video source (camera) is displayed in the preview window.

Switch between Live mode and Pause mode

- › If the camera is disabled (e.g. in the holder or in overheat protection) or is in pause mode:

Click on the  button.

This enables the camera and switches to Live mode.

- › If the camera is in Live mode:

Click on the  button.


The view switches to Pause mode. The image recorded most recently is shown as a still image.

This image can be imported and sent to VistaEasyView or the third-party application.

Open and close full screen mode

- › Click on the  button.

The video image is shown in full screen mode.

- › To close full screen mode, click on  in the full screen or open the context menu with the right mouse button and click on "Disable full screen mode".

The video image is shown in the program window of the preview window again.

Abort recording

- › Click on the  button.

The recording is deleted and cleared from the Job directory of the VistaEasy Job Management. The preview window is being closed.

Import the video image

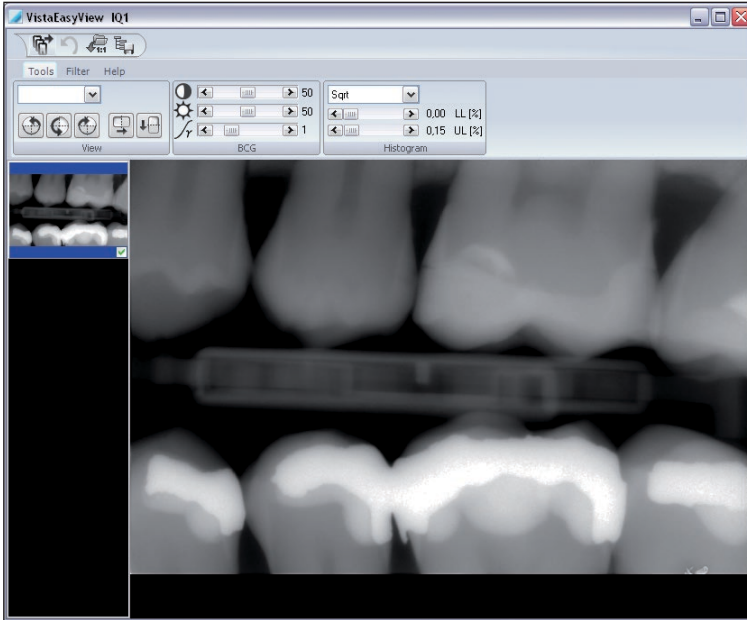
- › Click on the  button to import the recording.

Depending on the configuration, the imported recording is loaded into the third-party application or VistaEasyView. The VistaEasyView window appears only if VistaEasyView is enabled in the configuration (refer to chapter, "Configuration").

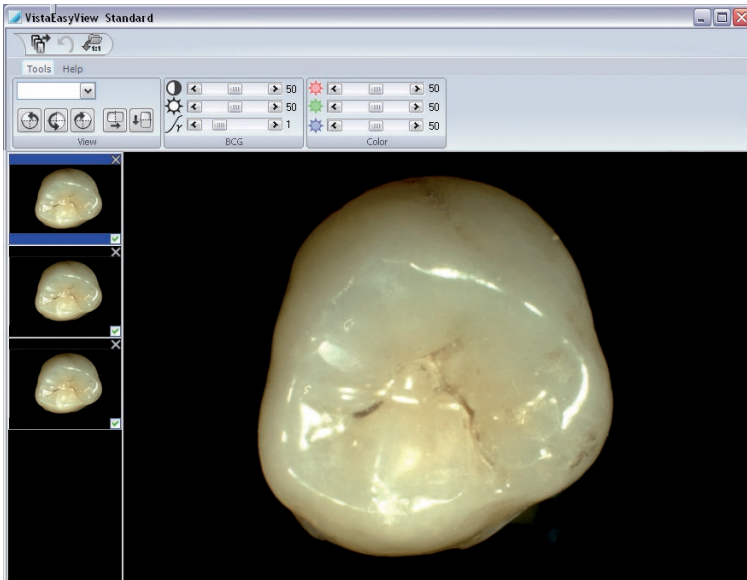
4.4 Viewing recordings in VistaEasyView

After transferring the recordings to VistaEasyView, one of the following views appears depending on the device used.

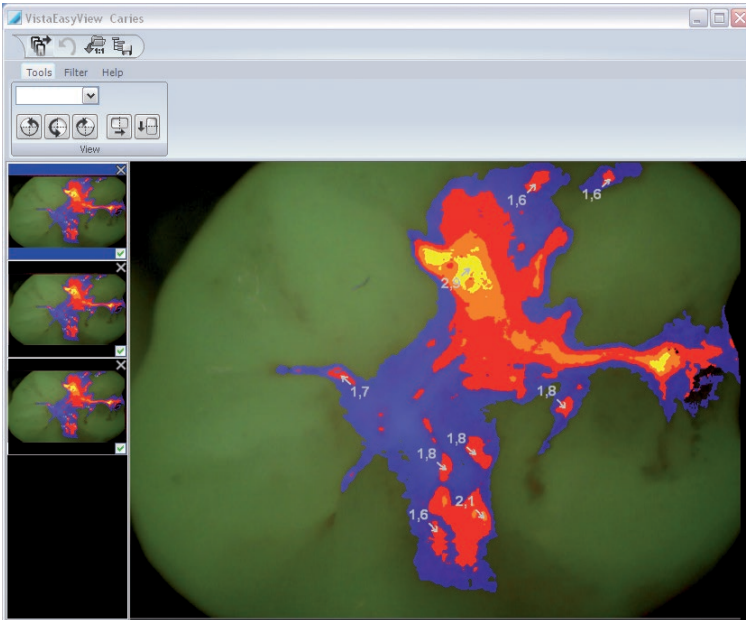
With ScanX/SensorX, the following view appears (example):



With CamX, the following view appears (example):



With CamX Spectra, the following view appears (example):



In VistaEasyView, you can edit the recordings and send them to the third-party application. The program interface is divided into various areas.

Quick Access Toolbar



You can manage the imported recordings in the Quick Access Toolbar.



Transfer images:

Send the images that are marked with a checkmark to the third-party application.



Undo:

Undo the most recent editing step.



Load original image:

Loads the original status of the recording.



Save mode configuration:

Save settings (BCG values, filter and histogram-optimization) that were made.



NOTICE


The settings that were made are saved directly in the mode. The saved changes are then always applied when this mode is used.

Image preview bar

The loaded recordings are shown in miniature form in the image preview bar and can be marked for transfer.

With recordings with the CamX and CamX Spectra, individual recordings can also be deleted in the image preview bar.

Delete recording (CamX, CamX Spectra)

- > Click on  in the image preview bar next to the recording to be deleted. This deletes the recording from the image preview bar.

4.5 Editing recordings in VistaEasyView

Tools and filters for editing the recordings

The tools and filters that are required for image editing are visible in VistaEasyView, depending on the device that is connected.

Tools – "View"



Increase / Decrease size:
A zoom factor can be chosen using the pull-down menu.



Rotate recording:
The recording can be turned by 90° to the left or right or by 180°.



Mirror recording:
The recording can be flipped horizontally or vertically.

Tool – "BCG" (Brightness, Contrast, Gamma)

This tool is only visible for recordings made with ScanX.



Contrast
The contrast of the recording can be adjusted with the slide control.



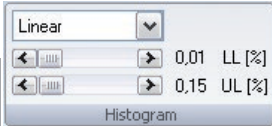
Brightness
The brightness of the recording can be adjusted with the slide control.



Gamma
The gamma values of the recording can be adjusted with the slide control.

Tools – "Histogram"

This tool is only visible for recordings made with ScanX and SensorX.

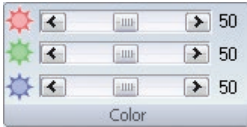


The histogram of gray values can be adjusted with the histogram optimization.

The calculation type of the evaluation curve (original, linear, sqrt, log, quad, S-Curve) can be selected for this purpose. The lower and upper percentage limit of the gray values can also be truncated by 10%. This hides the gray values in this range.

Tools – "Color"

This tool is only visible for recordings made with CamX.



Setting brightness values for the colors, red, green, blue (RGB)

Filter – "Intra", "Ceph" and "Pano"

These filters are visible with ScanX and SensorX.






Different filters can be used to support the diagnosis.

Filters

The filter set assigned to the X-ray image type (INTRA, PANO, CEPH) is displayed by default. For an undefined X-ray image or by clicking the "All filters" button (double arrow) the other filters become selectable. The diagnostic support is performed with original data as long as the "Use Original date" check box is activated. In all other cases the filter is selected matching the current type. The color represents the application case (caries, periodontal, etc.) and the color intensity is a measure of the filter strength if there are several filters for an application case (e. g. Caries1, Caries2). Structures or objects within the image, which may be of interest for the current diagnosis, are highlighted more strongly. For example, the periodontal gap contrast is displayed more intensely by the periodontal filter.







INTRA filter set

As shown, the filter set for INTRA image filtering adjustments are displayed in the functional area. Each of the seven filters are described by the list below. The functions can be selected where necessary.

Icon	Decription
	Intra Fine: General sharpening filter which enhances structures of 2 line pairs per mm.
	Intra High Diagnostic: Enhances structures of 2.5mm.
	Noise Reduction: Matches outlier pixels to their neighboring pixels.

CEPH filter set

As shown, the filter set for CEPH image filtering adjustments are displayed in the functional area. Each of the eight filters are described by the list below. The functions can be selected where necessary.

Icon	Decription
	Ceph Fine: General sharpening filter which enhances structures of 1 line pair per mm.
	Ceph 1: Enhances structures of 0.75 line pairs per mm with strong attenuation of high frequencies.
	Ceph PA: Enhances strongly structures of 0.5 line pairs per mm with very strong attenuation of high frequencies.
	Ceph High Diagnostic-10: Enhances structures of 10mm and sharpens the image.
	Ceph High Diagnostic-5s: Enhances structures of 5mm and sharpens the image lightly.
	Ceph High Diagnostic-5g: Enhances structures of 5mm and sharpens the image.



Noise Reduction:
Matches outlier pixels to their neighboring pixels.

PANO filter set

As shown, the filter set for PANO image filtering adjustments are displayed in the functional area. Each of the eight filters are described by the list below. The functions can be selected where necessary.

Icon

Decription



Pano Fine:
General sharpening filter which enhances structures of 2 line pairs per mm.



Pano Standard:
Enhances structures of 0.25 line pairs per mm with strong attenuation of high frequencies.



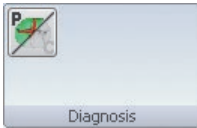
Pano High Diagnostic:
Enhances structures of 4mm and sharpens the image.



Noise Reduction:
Matches outlier pixels to their neighboring pixels.

Filter – "Diagnosis"

This button is used to switch between the prophylaxis mode CamX cameras and the caries mode used by CamX Spectra. For more information, applications, and analysis, see the installation and operating instructions for the specific device.



The currently active view can be identified from the symbol:



P: Camera is in prophylaxis mode



C: Camera is in caries mode

Help



Call up the Air Techniques website. Default: www.airtechniques.com



Call up VistaEasy Help:
PDF version of the operating instructions





Call up the window with information on the program:
Product name, program version, manufacturer's information

Edit recordings


- › Click on a miniaturized preview of the recording in the image preview bar.
The full-size version of the recording is shown in the main window.

Use tools and filters

- › Use the desired tools and filters on the recording.
- › If necessary, click on the  button to undo the last changes made.
- › If applicable, click on the  button to load the image in its original status again.

Configuring device-specific mode

If you always want to use the settings in tools "BCG", "Histogram" and in the filters for recordings with the selected device, these settings can be stored permanently as a mode.

- › Make the desired settings in the tools and filters.
- › Click on the  button in the Quick Access Toolbar.
The settings are stored and will be used for the next recording with the device.

4.6 Sending recordings from VistaEasyView to third-party applications

After the recordings are edited, the recordings to be sent to the third-party application can be chosen.



CAUTION

The settings for the BCG values, the applied filters, etc., are stored in the recording and, hence, are also transferred to the third-party application. These changes cannot be undone in the third-party application.



The marked recordings are sent to the third-party application as edited and displayed in VistaEasyView using the implemented interface (VistaEasy-TWAIN or VistaEasy).

VistaEasy cannot be closed if there still are recordings in the image preview bar. Recordings cannot be deleted in VistaEasyView either.



CAUTION


The transferred recordings must be saved in the third-party application. If the recordings are not saved, the data are irrevocably lost!

- › Mark desired recordings in the image preview bar using .
- › Click on the  button in the Quick Access Toolbar.
The recordings are sent to the third-party application and are shown in its program window.
- › Save recordings in the third-party application.
VistaEasyView is closed automatically, if no recordings are present any longer in the image preview bar after transfer of the recordings.

4.7 Closing VistaEasy

VistaEasyView is closed automatically once all recordings are edited and transferred to the third-party application.

If no recordings or jobs are present in VistaEasyView or in VistaEasy Job Management, the program can be closed manually.

- › Use the right mouse button to click on the  icon in the task bar.
A pop-up menu appears.

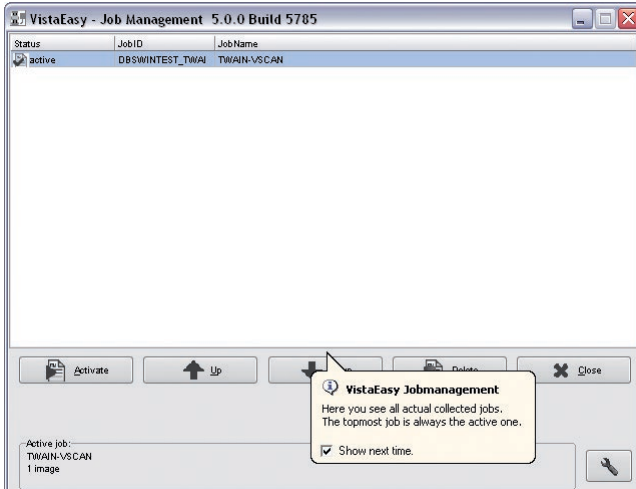


If the pop-up menu is active, you can close VistaEasy. If the pop-up menu is disabled (grayed-out), there are still recordings or jobs being edited. You then have to send these recordings to the third-party application in order to close VistaEasy.

- › Click on the pop-up menu.
This closes VistaEasy.

5 VistaEasy Job Management

An entry (job) is made in the Job Management when starting a recording. Example:



The status window shows a list of active jobs. Detailed information (number of images) is shown in the "Active jobs" area.

Existing jobs can be edited as follows:



Delete job



Select the job to be edited next.

Change editing sequence:



Move a job up in the list



Move a job down in the list



Close job management
(only possible if no other job is in the list.)

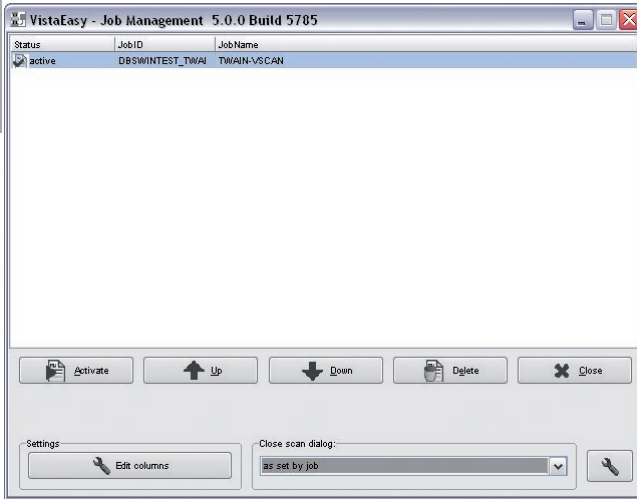


Show extended settings (configure job management)

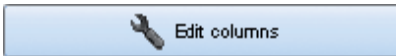
5.1 Configuring job management

> Click on the  button.

The "Settings" area and the "Close scan dialog" area are displayed in the lower part of the program window.



"Settings" area



Adapt the arrangement and content of the columns for job management

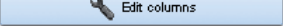
"Close scan dialog" area

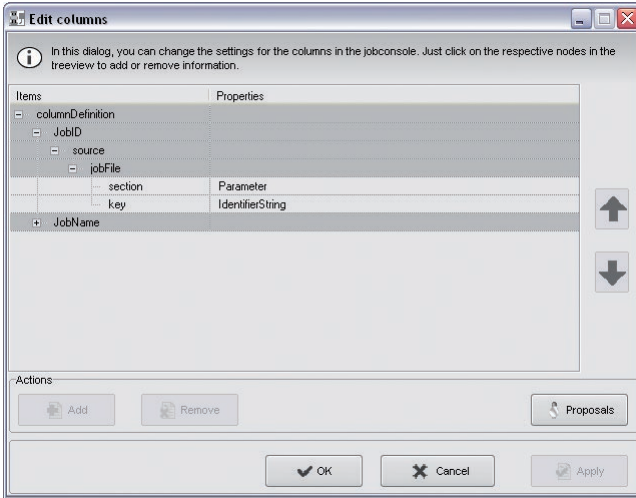
Close the Preview window after ending the scan process.

The following settings can be selected in the list:

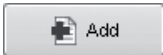
- | | |
|-----------------------------|-----------------------------------|
| "always manually": | Window stays open |
| "always close immediately": | Window closes automatically |
| "as defined by job": | As set in third-party application |

Adapt the arrangement and content of the columns

- › Click on the  button.
The "Edit columns" dialog window appears.



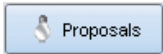
Here, you can arrange or delete and add columns and define column content.



Add column



Delete column



Show suggestions





Accept configuration and close dialog window



Discard changes and close dialog window




Accept configuration. Dialog window stays open.


- › Configure columns as desired.
- › Click on the  or  button to save the configuration.
The display in VistaEasy Job Management is adapted accordingly.

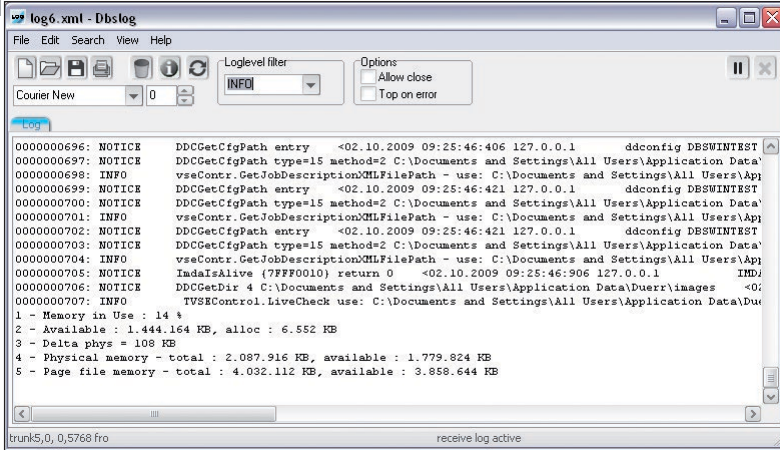
6 Log management

Output of information, warnings and error displays.

VistaEasy creates an icon in the task bar for this: 


6.1 Viewing the log file


- Use the right mouse button to double click on the  icon in the task bar. The dialog box for the log server with the log messages is shown.



The contents of the window can also be saved as a file.

7 Troubleshooting

If any problems (e.g. image plate is not ejected fully, x-ray image missing) either before, during or after scanning, the scan process can be ended and a report file created using the  button.

- › Click on the  button in the preview window.
This opens the troubleshooting.



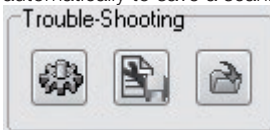
7.1 Transport

You can instruct the device to run forwards or backwards with the buttons in the "Transport" area.



7.2 Troubleshooting

Where external network devices are connected, e.g. ScanX, one can attempt to solve any problem automatically to save a scanner report or to recover lost images.



Automatic troubleshooting

The device attempts to remedy the problem automatically. If this is not successful, inform the technical services.

Save Scanner-Report as...


The window contents currently displayed can be saved here.

- › Click on the  button.

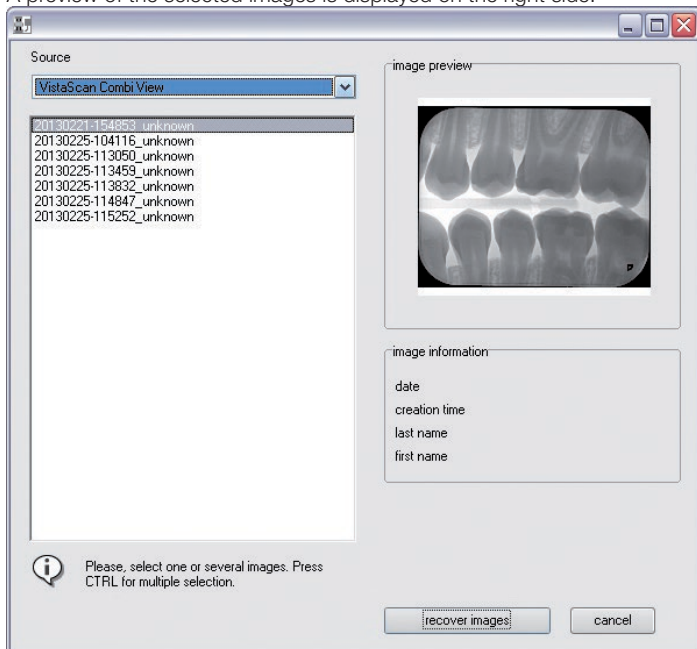
The standard "Save as..." Windows menu is shown, in which you can select the storage location and the file name. Three different files can be generated which must then be given different names on saving.

Image recovery

All scanned images are saved to a temporary directory for a period of two weeks. After two weeks the images are erased.

- > Click on the  button.
The image recovery window opens.
- > Under "Source", select the "Transferred images" item.
All the images taken in the previous two weeks are displayed in a list on the left side.
A preview of the selected images is displayed on the right side.

US



- > Mark those images in the list which should be recovered.
- > Click on the "Transfer image(s)" button.
The images look again like a normal scan job.

For over 50 years, Air Techniques has been a leading innovator and manufacturer of dental products. Our priority is ensuring complete satisfaction by manufacturing reliable products and providing excellent customer and technical support. Whether the need is digital imaging, utility room equipment or merchandise, Air Techniques can provide the solution via our network of authorized professional dealers.

Air Techniques' family of quality products for the dental professional include:

- **Digital Imaging**
 - Digital Radiography
 - Intraoral Cameras
 - Caries Detection Aid
 - X-ray Systems
 - Film Processors

- **Utility Room**
 - Dry Vacuums
 - Wet Vacuums
 - Air Compressors
 - Amalgam Separator
 - Utility Accessories
 - Utility Packages

- **Merchandise**
 - Imaging Accessories
 - Chemistry
 - Processor Cleaners
 - Surface Disinfectant
 - Instrument Cleaner
 - Hand Sanitizer & Hand Lotion
 - Evacuation System Cleaner
 - Water Line Cleaner

Manufactured for / Distributed by:

Air Techniques, Inc. | 1295 Walt Whitman Road | Melville, New York 11747- 3062 | USA
Phone: 800-247-8324 | Fax: 888-247-8481



DÜRR DENTAL SE | Höpfigheimer Str. 17 | 74321 Bietigheim-Bissingen | Germany

www.airtechniques.com



AIR
TECHNIQUES equipped for life®