

Warning: Wear skin and eye protection designed for handling typical Haz-Mat material. Use care at all times to prevent spillage.

Never work on equipment connected to live power. Remove power by disconnecting unit mains power prior to performing any procedures.

Use only CleanStream Cleaner to maintain the system vacuum lines. Do not use chlorine bleach or solutions of sodium hypochlorite as these products may result in equipment damage.

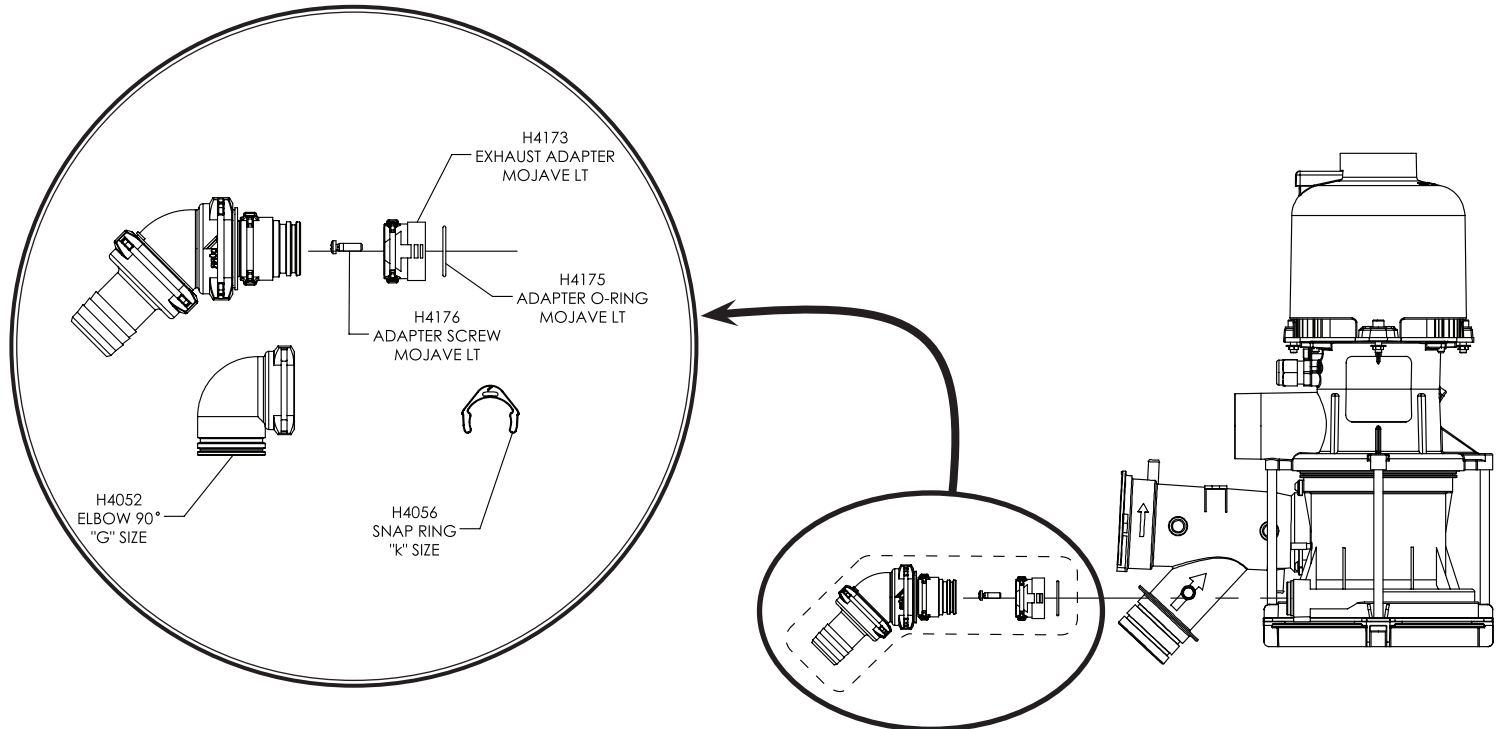
Drain Assembly Replacement - Refer to the illustrations below to replace the Drain Assembly. Assemble fittings in order shown.

1. Remove the existing Drain assembly including the installed adapter (H4173).

Warning: Do not over tighten screw (H4176) (approx. 8in-lb).

2. Replace the o-ring and adapter securing them with screw (H4176)
3. Use clip (H4056) to attach drain assembly to adapter.

Note: 90° elbow (H4052) can be used to replace 45° elbow depending on the installation requirements.



www.airtechniques.com