

EDGE

SCAN▶X[®] Edge

Smart, Compact and Reliable.

AIR
TECHNIQUES equipped for life[®]



Reliable, compact & virtually maintenance free

For decades now, the name Air Techniques has stood for the highest competence and performance in the field of dental X-ray technology. Time and time again, the company has translated over 50-years of history in X-ray systems into innovative and practical solutions. Today, dentists all around the world benefit from the advantages of digital X-ray technology with Air Techniques – high-resolution images for all diagnostic purposes.

- Virtually maintenance free
- Silent when scanning
- Flexible chairside imaging
- Key intraoral formats: 0, 1 and 2
- RFID plates
- Compact, lightweight with easy network integration



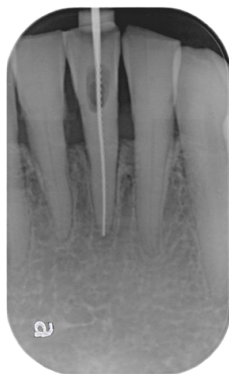


Easy positioning for optimal patient comfort

- High diagnostic image quality at 16.7 Lp/mm
- Wireless, thin flexible PSP's
- Key intraoral formats: 0, 1 and 2
- 100% active area
- Hygienically sealed patented barrier envelope
- Virtually impenetrable against light exposure

ScanX RFID IDX PSP Technology

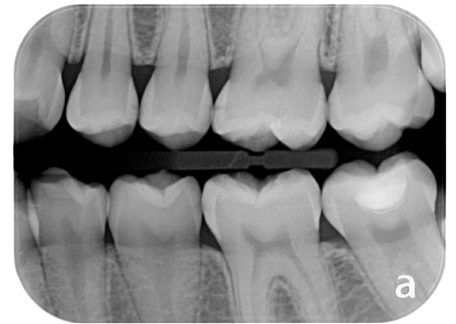
- No stored patient data
- Wrong size exposure correction
- Traceability of PSP over time



Size 0



Size 1



Size 2

Specifications

ScanX Edge (G8300A)

Plate sizes	S0, S1, S2
Real resolution (Lp/mm)	16.7
Greyscale (bits)	16 (65,538)
Weight	4kg
Dimensions H x W x D	231x167x216mm
Interfaces	LAN

What's in the box:

- ScanX Edge Device
- Qty 1: Size #2 ScanX IDX PSP
- Qty 100: Size #2 Barrier Envelopes
- Qty 1: Size #2 PSP Cassette
- Ethernet Cable 3m
- Power Supply



airtechniques.com

DIGITAL IMAGING
WITHOUT LIMITS FROM
AIR TECHNIQUES



www.facebook.com/AirTechMEA
www.facebook.com/AirTechAUNZ
www.facebook.com/AirTechLATAM

CORPORATE HEADQUARTERS
1295 Walt Whitman Road
Melville, New York 11747-3062
800-247-8324

ScanX is a registered trademark
of Air Techniques, Inc.
© Copyright 2022
PN 9922-577 Rev. B

AIR
TECHNIQUES equipped for life®