

ScanX Edge

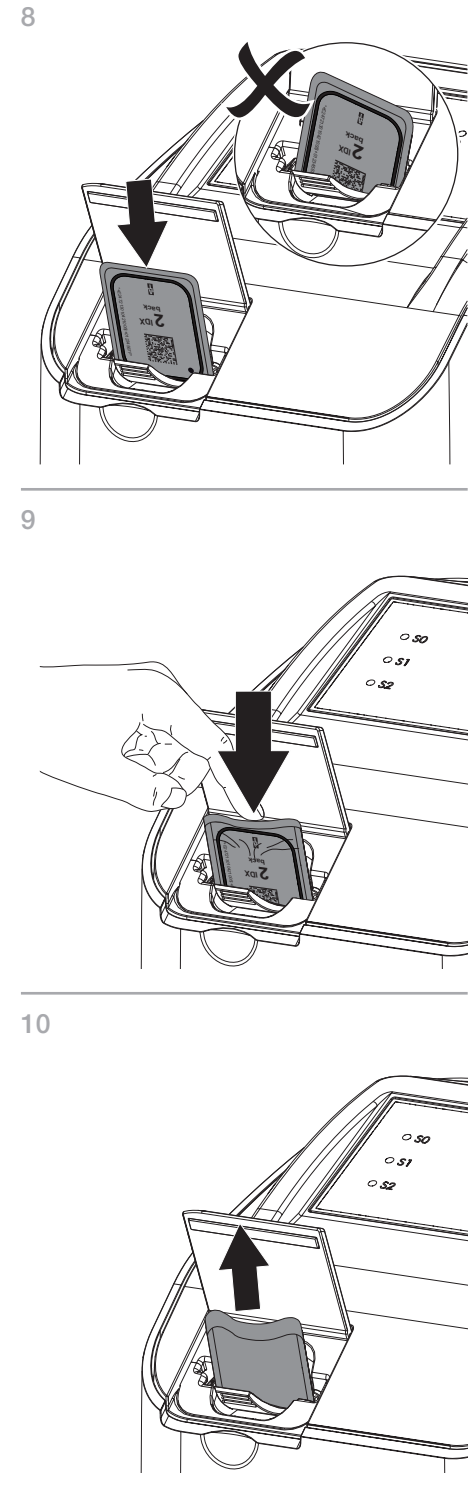
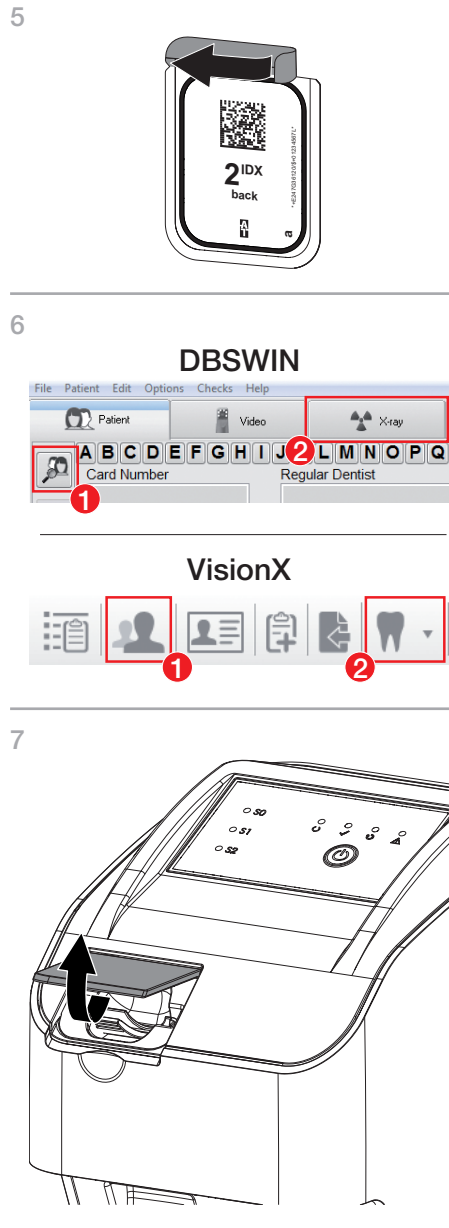
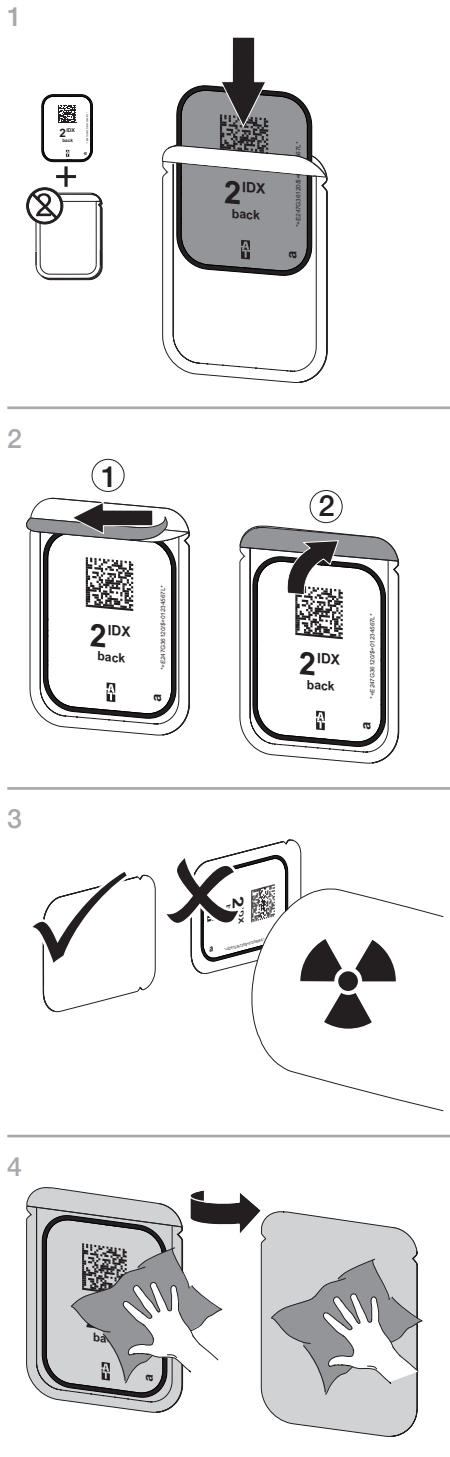
The following information supplements the installation and operating instructions of the unit.



As a general rule, the installation and operating instructions for the device must also be observed. These instructions contain important information including safety instructions and information on setup, electrical connections, commissioning, the disinfection process, the cleaning process, etc.



DÜRR DENTAL SE | Höpfigheimer Str. 17 | 74321 Bietigheim-Bissingen | Germany

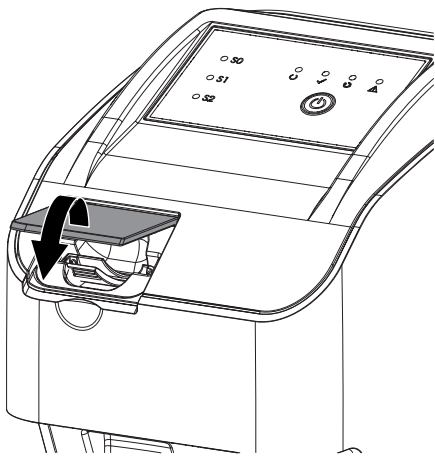


Manufactured for / Distributed by:
 Air Techniques, Inc. | 1295 Walt Whitman Road
 Melville, New York 11747- 3062, USA
 Phone: 800-247-8324 | Fax: 888-247-8481 X8301

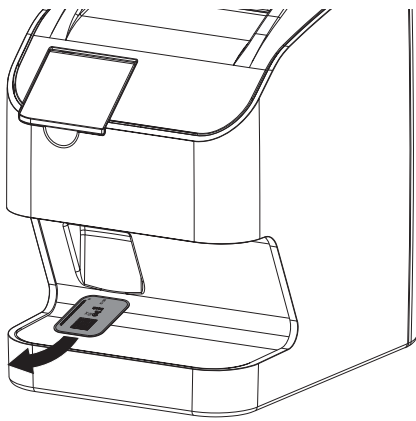


1911V001 **AIR TECHNIQUES** equipped for life®

11



12



13

