



VIDEO

Dr. Ron Kaminer explores the benefits of using CamX Triton HD in his practice.



Caries Detection Without the Guesswork

Air Techniques' CamX Triton HD combines caries detection with an intraoral camera to offer an all-inclusive approach to diagnosis and treatment

Visualization is non-negotiable when it comes to caries detection and diagnosis. But we can only diagnose what we can see. As we move further away from visual inspections and explorers—and closer to technology that reacts with carious bacteria—we rescue our patients from more invasive restorative procedures down the road.

"The CamX Triton HD from Air Techniques is the most comprehensive technology available for early caries detection," said Dr. Susan McMahon, who uses the 3-in-1 tool in her Pittsburgh, PA, cosmetic practice to identify decay and interproximal lesions, as well as capture high-quality intraoral images.

A 3-Headed Diagnosis

The magic of the CamX Triton HD comes from its 3 interchangeable heads that eliminate the need to switch among multiple devices during an appointment. A Spectra head identifies smooth surface and pit-and-fissure decay; a Proxi head detects interproximal lesions; and a Camera head takes high-definition images with autofocus.

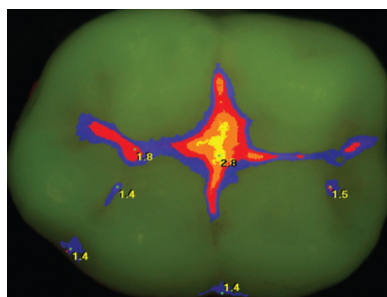
"I like to show patients the Spectra image and the intraoral photo of the same tooth," said Dr. McMahon. "It is readily apparent how the tooth may appear intact to the eye, but the technology allows us to diagnose decalcification and very incipient decay."

Visualizing the Decay

Fluorescence technology causes bacteria trapped in pits and fissures, on smooth surfaces, or between margins of existing composite or amalgam restorations to glow blue, red, orange, or yellow, depending on the stage of decay, while healthy enamel appears green. A numerical indicator from 0 to 5 indicates the extent of the decay.

This early caries detection means problem areas are brought to light and visualized at an earlier stage when they are more likely to go undetected on an x-ray or visual inspection.

"We have had patients who are so excited about the early detection and having a Proxi head exam instead of x-rays that they are posting about it on social media," concluded Dr. Mahon.



Spectra head uses both a color scale and numeric evaluation to illustrate caries activity.



Proxi head identifies interproximal caries without the use of x-ray radiation.



Camera head takes HD images from full face to macro using a variable focal distance.



FOR FREE INFORMATION:

800.921.4806
ext. 123
www.dps.
li/a/68X-155