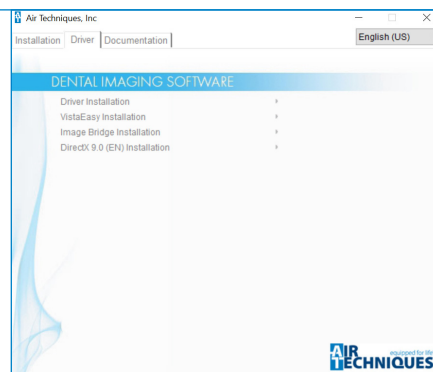


CAM►X® VistaEasy Quick Start Guide

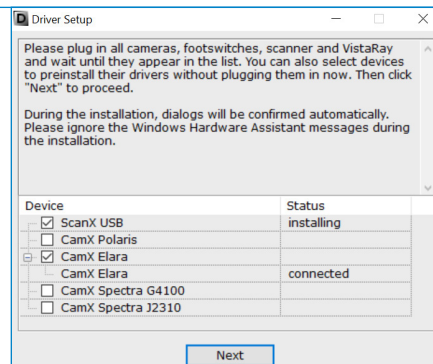
1

Load DBSWIN Disc, go to drivers tab and select VistaEasy Installation. Follow prompts to install the software.



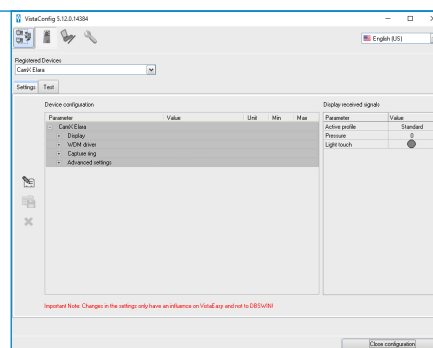
2

When the driver setup window appears, connect CamX product. Wait for it to be recognized and hit next to install driver.



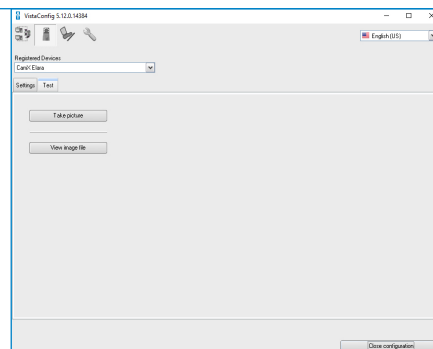
3

Go to Start menu, Air Techniques, then open Vista Config to test CamX product.



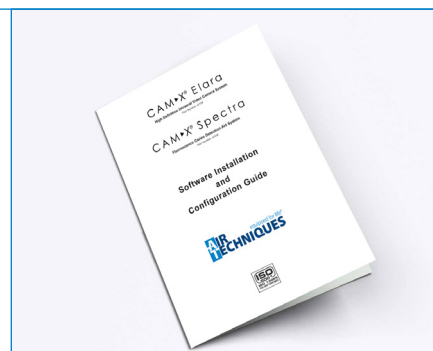
4

Once VistaConfig opens, select camera icon at top of window, camera will appear under registered devices, go to Test tab, then select Take a Picture. Take a few test shots with camera. Close VistaConfig program.



5

Setup in DBSWIN or 3rd Party Imaging software using the 3rd Party Software and Configuration Guide provided in box or found on www.airtechniques.com



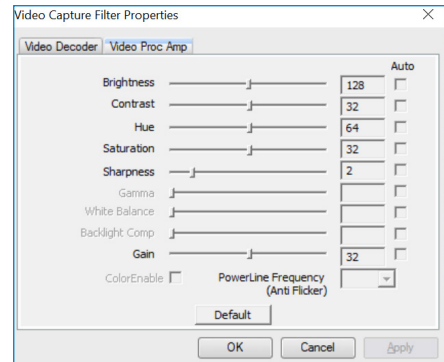
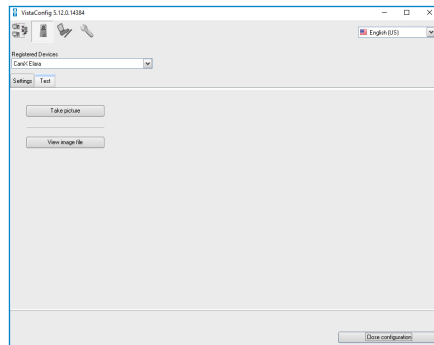
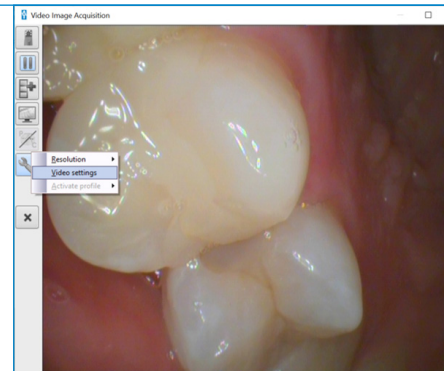
CAM►X® Quick Start Guide

Optional Settings

Adjust Image Settings

1

Open VistaConfig, select camera icon at top of window, go to Test tab and select Take a Picture. In acquisition window, Select Wrench/Settings icon, then select video settings. Adjust preferences as required. Select apply. Repeat at each work station.



Turn on VistaEasy View for Multiple Image Capture

2

Open VistaConfig, go to Settings Tab (wrench icon). Select the check box Activate VistaEasy View. Close VistaConfig.

