

**Thank You and Congratulations** on your purchase of the ScanX Duo Touch the latest imaging product from Air Techniques, Inc. The devices are hereafter referred to as ScanX throughout this document.

This document provides brief information to help you get started using your ScanX for the first time. Refer to the associated manual included on the Software and Manuals Disk provided with each unit for detailed information. Review and follow the guidelines provided in the manual to ensure your ScanX gives the highest level of service.

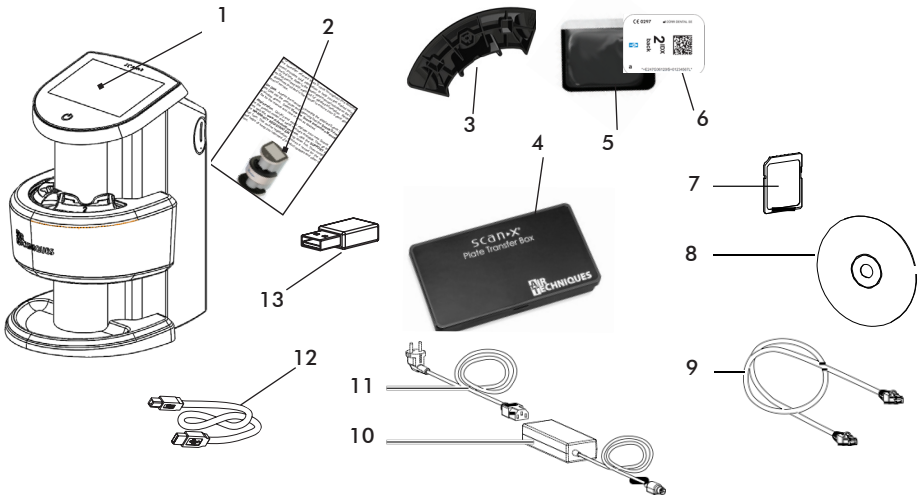
**Manual On Disk.** Access the manual by inserting the supplied ScanX Software and Manuals Disk into the computer and observing that the **ScanX Touch** window opens. Select **View the Installation and Operating Instructions**, open the PDF file for the manual and view or print as desired.

**On-line Registration.** Quickly and easily register your new ScanX on-line. Just have the product model and serial number available. Then go to the Air Techniques web site, [www.airtechniques.com](http://www.airtechniques.com), click the **SUPPORT** link and select the **WARRANTY REGISTRATION** drop down link. Then complete the registration form. This on-line registration ensures a record for the warranty period and helps us keep you informed of product updates and other valuable information.



ScanX Duo Touch, J1200

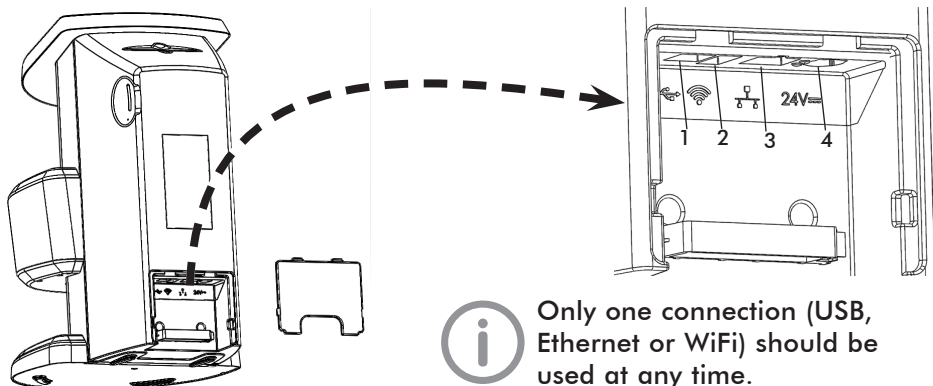
**Scope of delivery.** Unpack each component of ScanX and inspect for physical damage such as scratched panels, damaged connectors, etc. If there is any damage, notify your Air Techniques authorized dealer immediately so corrective action can be taken. Save all cartons and packing materials to protect ScanX in the event that it is to be transported or shipped in the future. If any item is missing, notify your dealer.



- |   |                                     |    |                                      |
|---|-------------------------------------|----|--------------------------------------|
| 1 | ScanX Duo Touch Image Plate Scanner | 8  | Software and manual disk             |
| 2 | ScanX Quick Start Guide             | 9  | Network cable                        |
| 3 | Plate guides                        | 10 | Power supply adapter                 |
| 4 | Transfer box                        | 11 | Mains cable                          |
| 5 | Barrier envelope                    | 12 | USB cable                            |
| 6 | Phosphor storage plate (PSP)        | 13 | Wireless network adapter (installed) |
| 7 | SDHC memory card (installed)        |    |                                      |

**Site Selection.** The ScanX may be located almost anywhere in the office. Follow these guidelines for optimum performance:

- Lighting conditions: Set up the scanner in ordinary room light, however, direct sunlight and interior lighting above and near the unit producing more than 1000 lux of light at the PSP inlet must be avoided.
- Provide a stable, flat counter top large enough to hold the scanner.
- Locate the computer within 6 feet when using USB.
- Locate unit no further than 10 feet from a AC outlet for connection of the 24VDC Power Supply Adapter/Mains Cable.



1. **USB Connector** - Accepts USB Type B connector to connect ScanX for operation via a single computer.
2. **Wireless Adapter Connector** - Accepts USB Type A connector to connect a USB Wi-Fi adapter allowing ScanX access to Wi-Fi network for operation.
3. **Ethernet Network Cable Connection** - Accepts RJ45 connector to connect ScanX for operation via the Ethernet.
4. **24VDC Connection** - Provides for connection of power supply unit providing ScanX operating power.

### ScanX Rear Panel Connection Ports

**Connect ScanX for operation.** ScanX may be connected for operation using USB, Ethernet or Wi-Fi connections. Only one connection should be used at any time. Refer to the ScanX Rear Panel Connection Ports illustration above and perform the connection as necessary.

**Connect ScanX with USB.** Remove the cover on the rear of ScanX and connect the supplied USB cable between to the unit's USB connection port (item 1) and the computer. Perform the Electrical connection procedures provided on the next page.



See installing and configuring ScanX in the manual for information on connecting to an Ethernet or Wi-Fi network.

**Connect ScanX with Wi-Fi adapter.** Remove the cover on the rear of ScanX and connect the supplied Wi-Fi adapter to the unit's wireless connection port (item 2). Perform the Electrical connection procedures provided on the next page.

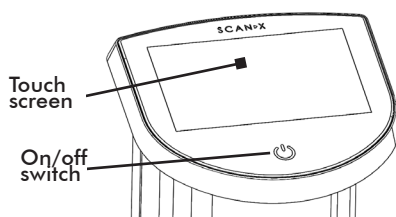
**Connect ScanX with Ethernet cable.** Remove the cover on the rear of ScanX and connect the supplied Ethernet cable between the unit's Ethernet network connection port, item 3 and the facility network connector. Perform the Electrical connection procedures provided on the next page.

---

**Electrical connection.** Perform the following steps to connect the ScanX to the facility Mains. Before initial start-up, check the supply voltage with the voltage information on the model identification plate (see also “4 Technical Data” in the manual).

1. Remove the cover from the rear of the device.
2. Connect the 24VDC Power Supply Adapter Output Connection Cable to the Inlet Power Jack (item 4) located on ScanX rear panel as shown by the ScanX Rear Panel Connection Ports illustration.
3. Connect the 24VDC Power Supply Adapter to the Mains outlet using the Mains Cable.
4. Verify that the On/Off switch illuminates amber denoting ScanX is in the standby mode.
5. Replace and secure the rear cover making sure that it is correctly fitted.

Switch the scanner from Standby to ON by pressing the On/Off switch (⏻) located on the top of the scanner. Verify that the On/Off switch illuminates, signifying ScanX is on.



**Computer Setup.** Set up the computer system according to the manufacturer's recommendations. Make sure that the computer meets all requirements listed in the manual. Before connecting the ScanX to your computer/network or attempting to use it for the first time, run the Setup program on the ScanX Software and Manuals Disk included with the ScanX.

**USB Driver Setup.** When using USB, windows should automatically find the USB drivers once the ScanX and computer are turned on.

**Initial start-up.** Refer to the manual section 8 for detailed procedures to register and configure ScanX via VistaConfig. This allows ScanX to be operated using USB, Ethernet or Wi-Fi connections. Once properly registered and configured, ScanX is ready for use.